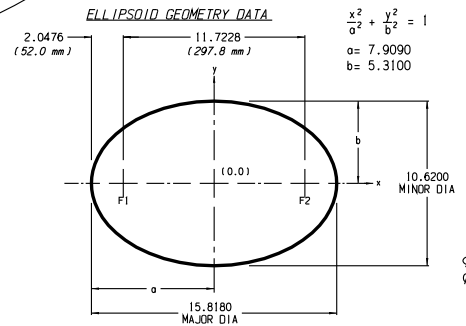
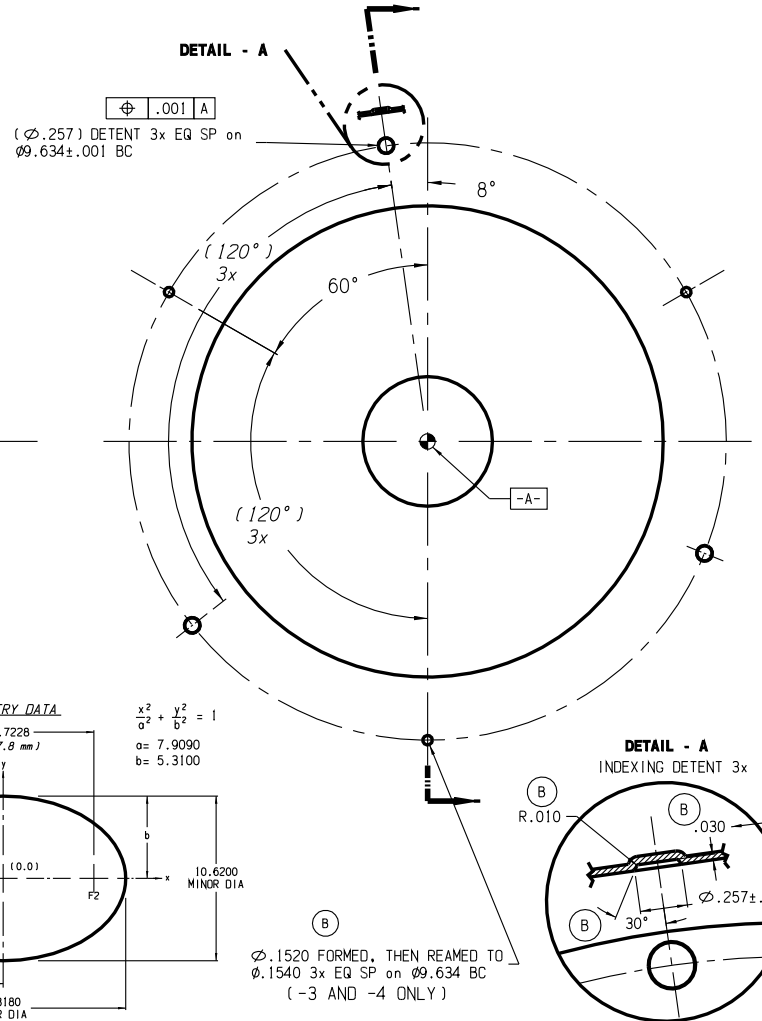
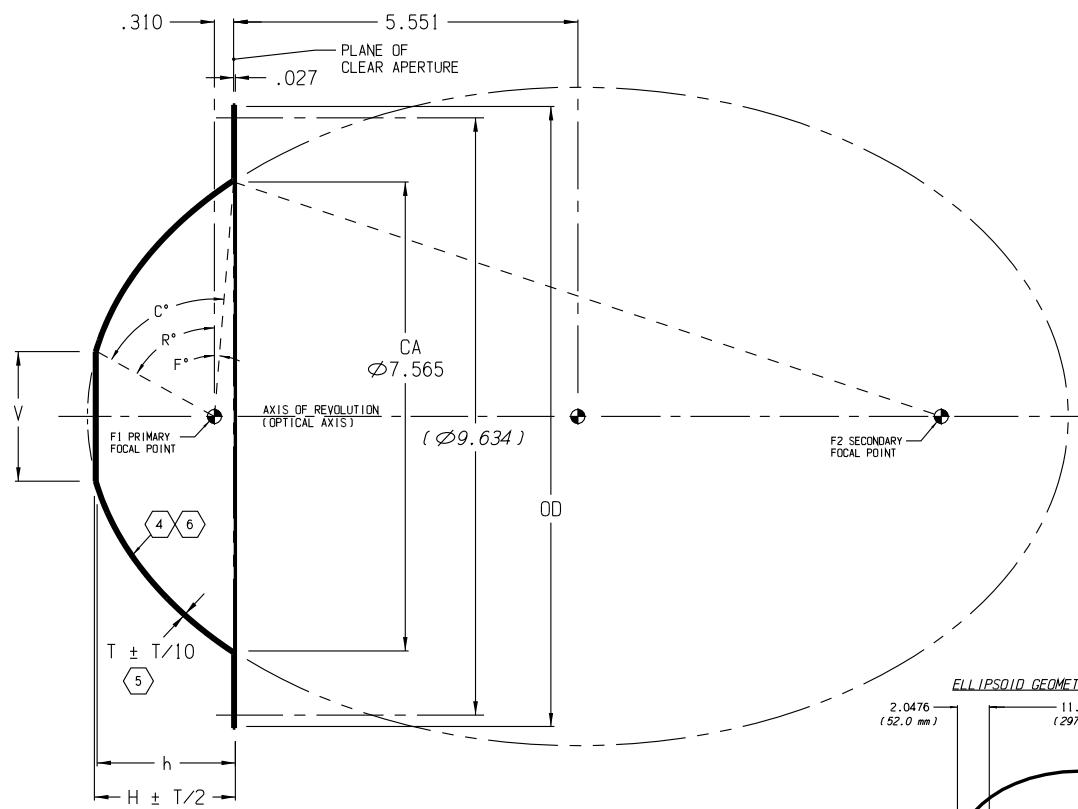


REVISIONS				
ZONE	REV	DESCRIPTION	DATE	APPROVED
	A	.045 THICKNESS WAS .040, ADDED -3 AND -4 TO DATA TABLE	12-10-01	KMT
	B	30° WAS 10°, .030 WAS .050, ADDED R.010, Ø.152 FORMED HOLES AT 3x WAS Ø.1420 AT 2x	01-30-02	KMT
	C	ALL .040 WALL THICKNESSES T WERE .045 CHANGED H VALUES ACCORDINGLY	09-17-03	GFW /

NOTES: (UNLESS OTHERWISE SPECIFIED)

- SPECIFICATION CONTROL DRAWING.
- DEBURR SHARP EDGES .015 MAX WHERE APPLICABLE.
- FOR SPECIFIC CUSTOMER FEATURES, REFER TO DRAWINGS E298-X-XX.
- REFLECTOR TO BE REPLICATED FROM SPECIFIED MASTER TOOL EXHIBITING REQUIRED ELLIPTICAL GEOMETRY AND SPECULAR SURFACE FINISH OF 80-50 SCRATCH-DIG PER MIL-O-13830A.

- 5 NOMINAL THICKNESS T MAY VARY ± T/4 WITHIN .25 OF EDGES.
- 6 FINAL REFLECTIVE SURFACE CONDITION WITH AVAILABLE REFLECTIVITY ENHANCEMENT COATINGS DEFINED AS FOLLOWS: (ADD DESIGNATED SUFFIX TO P/N)
- RH ELECTRO-DEPOSITED BRIGHT RHODIUM
 - AQ VACUUM DEPOSITED ALUMINUM WITH SiO₂ (QUARTZ)
 - AF VACUUM DEPOSITED ALUMINUM WITH MgF₂ (MAGNESIUM FLUORIDE)
 - DCC DICHOIC COLD COATING - SPECIFY WAVELENGTH REGION
 - SP OTHER SPECIAL COATINGS AS SPECIFIED



DASH NO.	V	OD	T	H	h	R°	F°	C°	f#	DETENT DETAIL
-4	Ø2.563	Ø10.05	.040	2.186	2.151	54.76°	4.53°	59.28°	1.59	YES
-3	Ø2.090	Ø10.05	.040	2.265	2.230	61.10°	4.53°	65.62°	1.59	YES
-2	Ø2.563	Ø10.05	.040	2.193	2.151	54.76°	4.69°	59.45°	1.59	NO
-1	Ø2.090	Ø10.05	.040	2.272	2.230	61.10°	4.69°	65.79°	1.59	NO

(A)

SPEC CONTROL DWG

NEXT ASSY	USED ON
APPLICATION	DO NOT SCALE DRAWING

QTY REQD	CAGE CODE	PART OR IDENTIFYING NO	NOMENCLATURE OR DESCRIPTION	MATERIAL SPECIFICATION	ITEM NO
			REFLECTOR, ELLIPTICAL		

UNLESS OTHERWISE SPECIFIED DIMENSIONS ARE IN INCHES TOLERANCES ARE:

FRACTIONS ± 1/16 DECIMALS ± .001 ANGLES ± 1/2°

MATERIAL: ELECTROFORMED NICKEL LSSN OFI TYPE I

FINISH: NOTES 4,6

CONTRACT NO: 00-E296

APPROVALS: MSP DATE: 07-27-00

DESIGN ACTIVITY

SCALE: 5/8 E298-R.PRT SHEET 1 OF 1

SIZE: C CAGE CODE: OY1Y4 DWG NO: E298 REV: C

