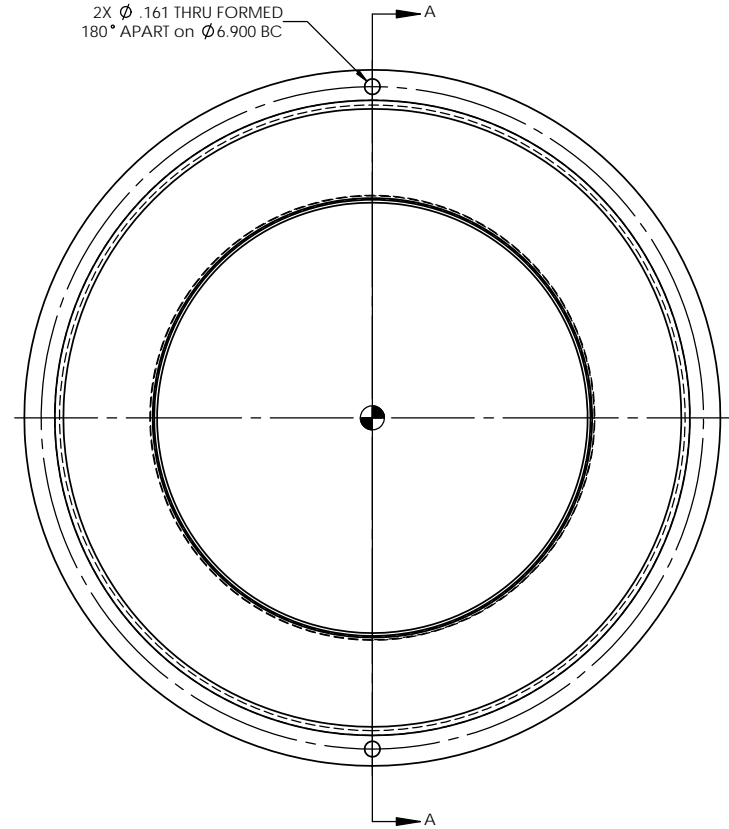
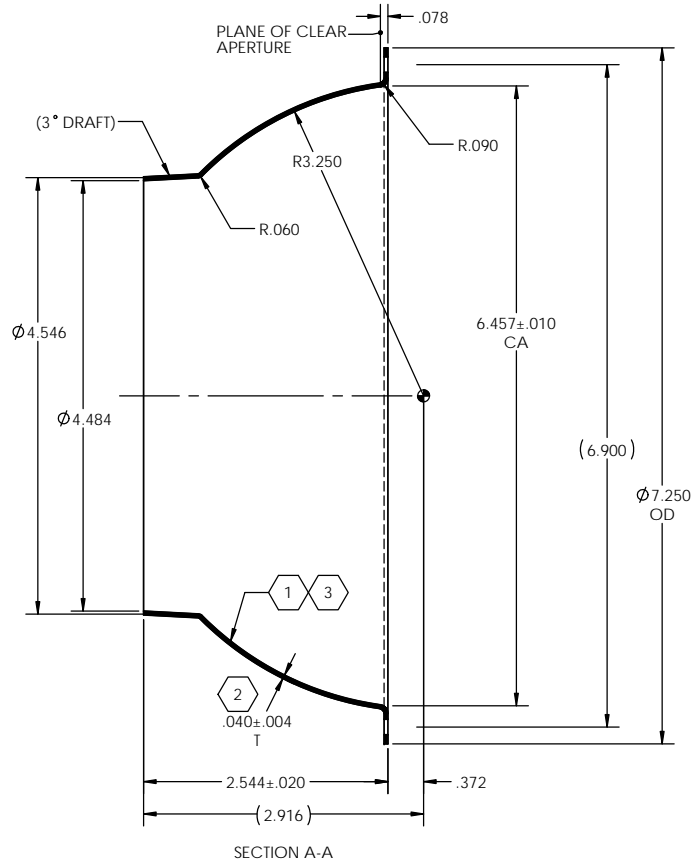



NOTES: UNLESS OTHERWISE SPECIFIED

- 1 ELECTROFORM REFLECTOR FROM MASTER TOOL WITH SPECULAR SURFACE FINISH OF 80-50 SCRATCH-DIG PER MIL-O-13830A.
- 2 NOMINAL THICKNESS (T) MAY VARY ± T/4 WITHIN .25 OF EDGES.
- 3 REFLECTIVE SURFACE COATING TO BE SEPARATELY SPECIFIED.
- 4 FOR SPECIFIC CUSTOMER FEATURES, SEE DRAWINGS S3250-0100-XX.

REVISIONS			
REV.	DESCRIPTION	DATE	APPROVED
Ø	INITIAL DRAWING RELEASE	4/27/1999	KMT
A	REVISED TO GENERIC STANDARD PRODUCT	7/26/2000	MSP
B	INITIAL SOLIDWORKS DRAWING RELEASE	11/9/2011	JEH



EF SURFACE AREA = 0.3899 SQ. FT.

UNLESS OTHERWISE SPECIFIED DIMENSIONS ARE IN INCHES [mm] GD&T PER ASME Y14.5-2009 DO NOT SCALE DRAWING		CONTRACT NO. 99-S3250		 42310 WINCHESTER RD. TEMECULA, CA 92590 WWW.OPTIFORMS.COM			
TOLERANCES FRACTIONS .XX ± .02 ± 1/2" DECIMALS .XXX ± .005 ANGLES		DRAWN JEH DATE 11/09/11					
SURFACE ROUGHNESS DEBURR SHARP EDGES .015 MAX CHAMFER THREADS .01 PAST ROOT DIAMETER		CHECKED DATE		REFLECTOR - SPHERICAL OFI STD PRODUCTS			
MATERIAL 6061-T6 (SS)		ENGR KMT DATE 11/09/11					
NEXT ASSY	USED ON	FINISH SEE NOTES 1 & 3		SIZE C	CAGE CODE OY1Y4	DWG. NO. S3250-0100	REV B
APPLICATION		THIRD ANGLE PROJECTION		SCALE 1:1	WT 0.218 lbs.	CAD NO. S3250	SHEET 1 OF 1