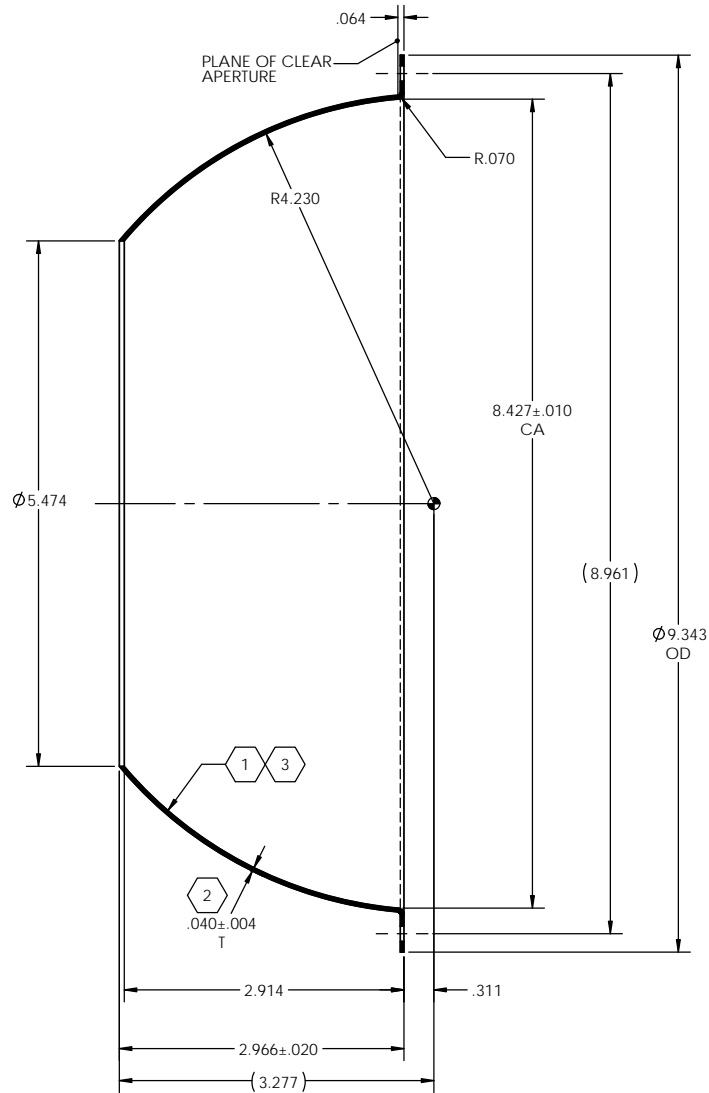


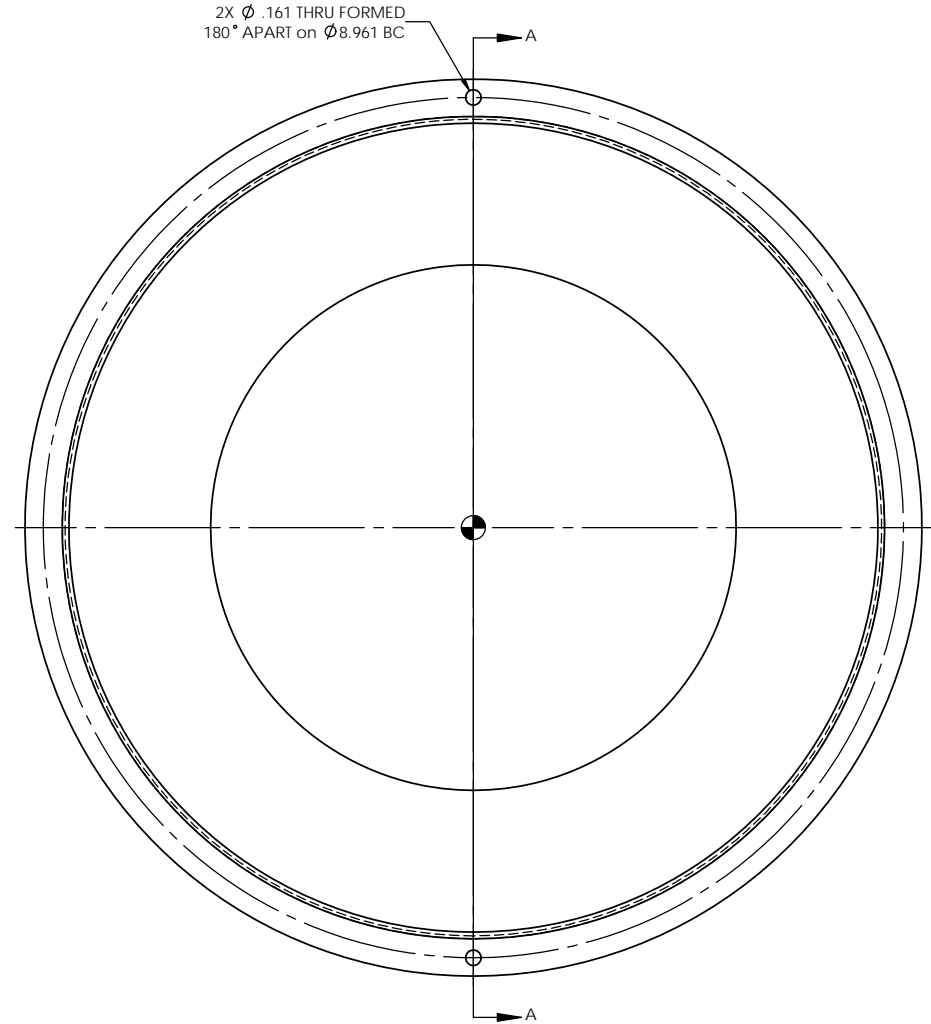
NOTES: UNLESS OTHERWISE SPECIFIED

- 1 ELECTROFORM REFLECTOR FROM MASTER TOOL WITH SPECULAR SURFACE FINISH OF 80-50 SCRATCH-DIG PER MIL-O-13830A.
- 2 NOMINAL THICKNESS (T) MAY VARY  $\pm$  T/4 WITHIN .25 OF EDGES.
- 3 REFLECTIVE SURFACE COATING TO BE SEPARATELY SPECIFIED.
- 4 VERTEX HOLE OPENING IS PREFERRED REGISTRATION FEATURE FOR AXIAL ALIGNMENT OF REFLECTOR. PLANE OF CLEAR APERTURE NOT RECOMMENDED FOR THIS PURPOSE.
- 5 FOR SPECIFIC CUSTOMER FEATURES, SEE DRAWINGS S4230-0100-XX.

REVISIONS			
REV.	DESCRIPTION	DATE	APPROVED
Ø	INITIAL DRAWING RELEASE	12/07/1999	MSP
A	REVISED TO GENERIC STANDARD PRODUCT	7/26/2000	MSP
B	INITIAL SOLIDWORKS DRAWING RELEASE	05/25/12	JEH



SECTION A-A



EF SURFACE AREA = 0.6211 SQ. FT.

UNLESS OTHERWISE SPECIFIED DIMENSIONS ARE IN INCHES [mm] GD&T PER ASME Y14.5-2009 DO NOT SCALE DRAWING		CONTRACT NO.	
FRACTIONS $\pm$ 1/16	DECIMALS $\pm$ .02	ANGLES $\pm$ 1/2°	DRAWN <b>JEH</b> DATE <b>11/09/11</b>
TOLERANCES FRACTIONS $\pm$ 1/16			CHECKED DATE
DECIMALS $\pm$ .02			ENGR <b>KMT</b> DATE <b>11/09/11</b>
ANGLES $\pm$ 1/2°			MATERIAL <b>6061-T6 (SS)</b>
SURFACE ROUGHNESS			FINISH SEE NOTES 1 & 3
DEBURR SHARP EDGES .015 MAX CHAMFER THREADS .01 PAST ROOT DIAMETER			SCALE <b>C</b> CAGE CODE <b>OY1Y4</b> DWG. NO. <b>S4230-0100</b> REV <b>B</b>
NEXT ASSY	USED ON	APPLICATION	SCALE 1:1 WT 0.345 lbs. CAD NO. S4230 SHEET 1 OF 1



REFLECTOR - SPHERICAL  
OFI STD PRODUCTS