

6 FINAL REFLECTIVE SURFACE CONDITION WITH AVAILABLE REFLECTIVITY ENHANCEMENT COATINGS DEFINED AS FOLLOWS: (ADD DESIGNATED SUFFIX TO P/N)

- RH ELECTRO-DEPOSITED BRIGHT RHODIUM
- AQ VACUUM DEPOSITED ALUMINUM WITH SiO<sub>2</sub> (QUARTZ)
- AF VACUUM DEPOSITED ALUMINUM WITH MgF<sub>2</sub> (MAGNESIUM FLUORIDE)
- DCC DICHROIC COLO COATING - SPECIFY WAVELENGTH REGION
- SP OTHER SPECIAL COATINGS AS SPECIFIED

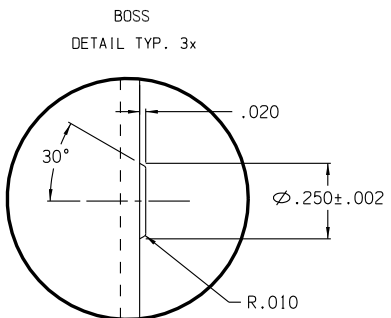
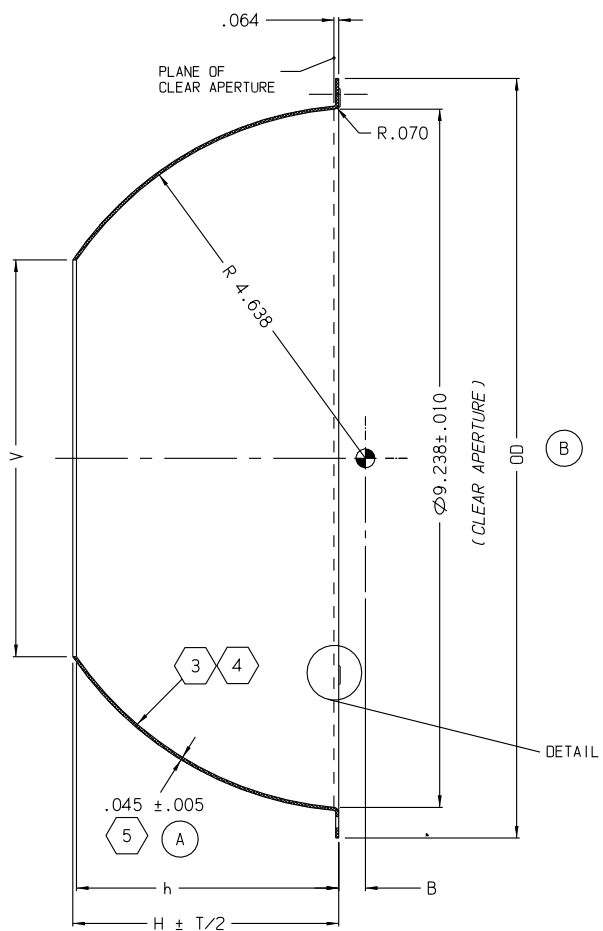
REVISIONS				
ZONE	REV	DESCRIPTION	DATE	APPROVED
	A	ADDED -2, CHG'D DRAWING NO FROM S4638-1 SPECIFIC TO S4638 GENERIC	07-26-00	MSP
	B	ADDED -3, DELETED -2, REVISED -1 FOR THICKNESS	12-05-01	KMT
	C	ADDED -4, DELETE -1	07-22-02	KMT

NOTES: (UNLESS OTHERWISE SPECIFIED)

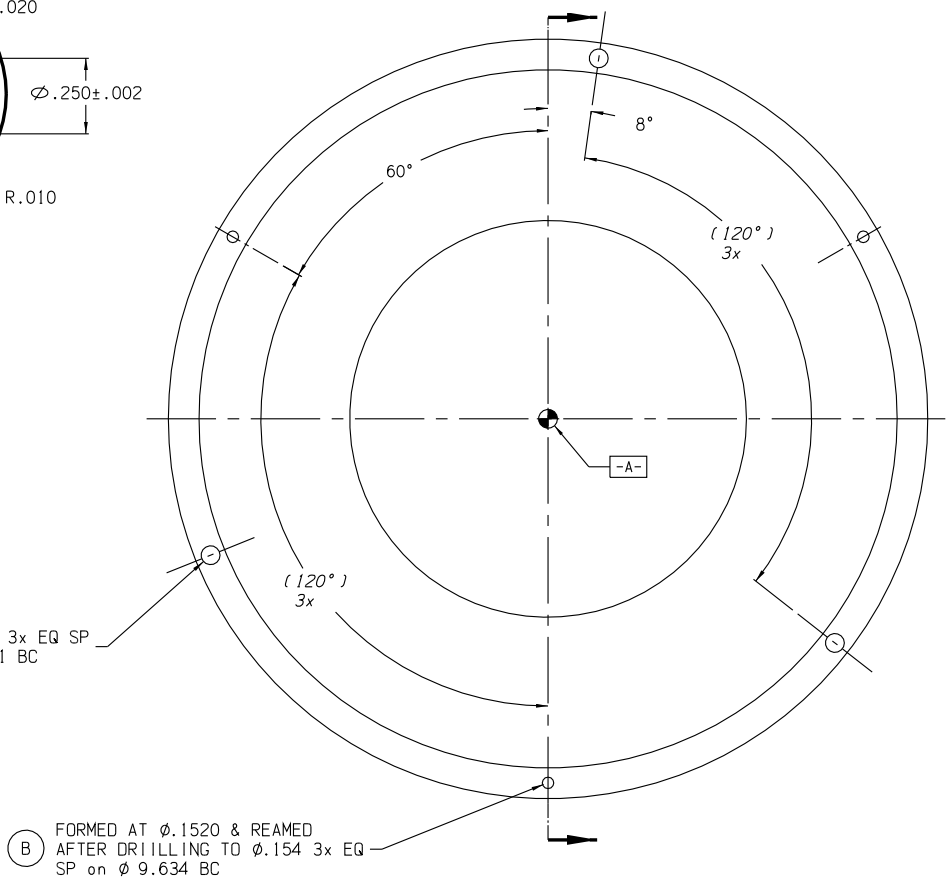
1. SPECIFICATION CONTROL DRAWING.
2. DEBURR SHARP EDGES .015 MAX WHERE APPLICABLE.
3. FOR SPECIFIC CUSTOMER FEATURES, SEE DRAWINGS S4638-X-XX

4 REFLECTOR TO BE REPLICATED FROM SPECIFIED MASTER TOOL EXHIBITING REQUIRED SPHERICAL GEOMETRY AND SPECULAR SURFACE FINISH OF 80-50 SCRATCH-DIG PER MIL-O-13830A.

5 NOMINAL THICKNESS T MAY VARY ± T/4 WITHIN .25 OF EDGES.



(Ø.250) BOSS 3x EQ SP on Ø9.634 ± .001 BC  
 Ⓢ .001 A



FORMED AT Ø.1520 & REAMED AFTER DRILLING TO Ø.1154 3x EQ SP on Ø 9.634 BC

-4	Ø5.300	.045	3.507	3.452	10.05	.354	.070	YES
-3	Ø5.250	.045	3.524	3.470	10.05	.354	.070	YES
-2	NO LONGER AVAILABLE							
-1	NO LONGER AVAILABLE							
DASH NO.	V	T	H	h	OD	B	R	BOSS DETAIL

SPEC CONTROL DWG

APPLICATION	USED ON

QTY REQD	CAGE CODE	PART OR IDENTIFYING NO	NUMERATURE OR DESCRIPTION	MATERIAL SPECIFICATION	ITEM NO
			PARTS LIST		
UNLESS OTHERWISE SPECIFIED DIMENSIONS ARE IN INCHES TOLERANCES ARE:			CONTRACT NO 99-S4638		
FRACTIONS ± 1/16			APPROVALS MSP DATE 07-26-00		
DECIMALS .001 ± .005			DRAWN		
ANGLES ± 1/2°			CHECKED		
MATERIAL ELECTROFORMED NICKEL-LSSN DFI TYPE I			ENGR		
FINISH NOTES 4,6			DESIGN ACTIVITY		
DO NOT SCALE DRAWING			SCALE N/A		
			S4638-R.PRT		
			SHEET 1 OF 1		

**OPTI-FORMS, INC.** FENNEL CALIFORNIA 92500

REFLECTOR, SPHERICAL OF 1 STANDARD PRODUCTS

SIZE **C** CAGE CODE OY1Y4 DWG NO **S4638** REV **C**