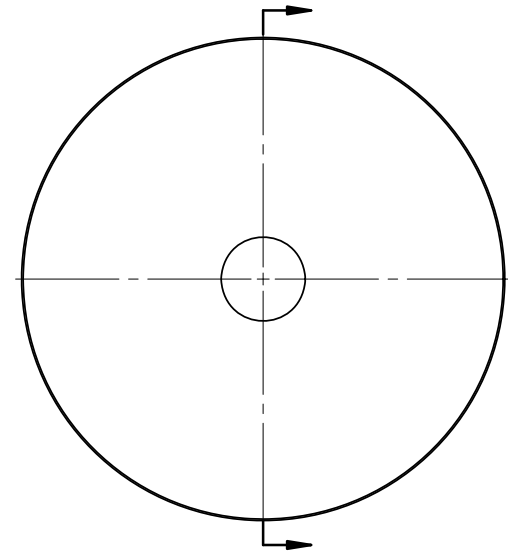
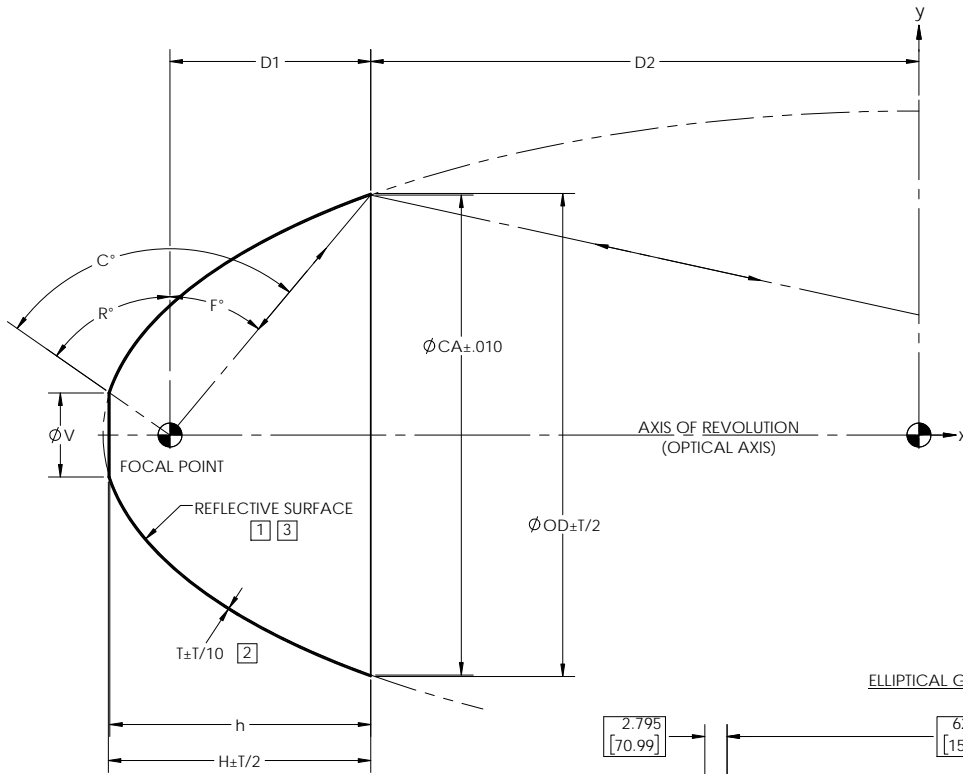


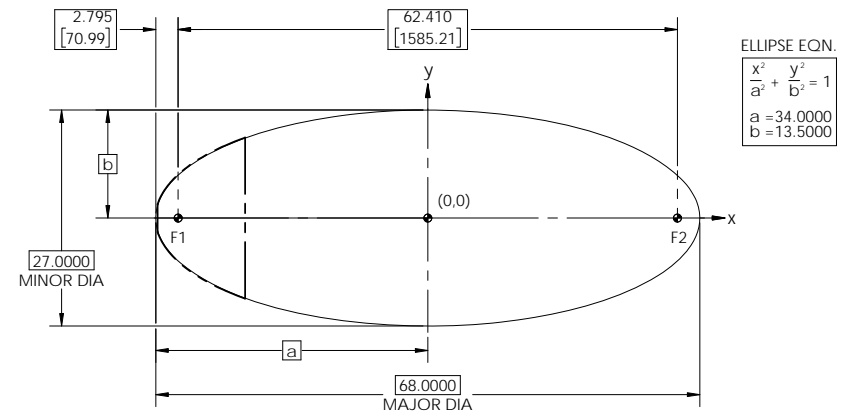
REVISIONS			
REV	DESCRIPTION	DATE	APPROVED
Ø	INITIAL DRAWING RELEASE	09/05/17	RRS

NOTES: UNLESS OTHERWISE SPECIFIED

- 1 ELECTROFORM REFLECTOR FROM MASTER TOOL WITH SPECULAR SURFACE QUALITY OF 80-50 SCRATCH-DIG PER MIL-PRF-13830B.
- 2 NOMINAL THICKNESS (T) MAY VARY ± T/4 WITHIN .25 OF EDGES.
- 3 REFLECTIVE SURFACE COATING TO BE SEPARATELY SPECIFIED.



ELLIPTICAL GEOMETRY DATA



DASH NO.	CA	V	OD	T	D1	D2	H	h	R°	F°	C°	f#
E1585	20.000	3.500	20.127	0.060	8.364	22.841	10.935	10.872	55.10	39.91	95.00	2.75
E1585-0100	20.000	5.500	20.170	0.080	8.364	22.841	10.536	10.446	37.13	39.91	77.04	2.75
E1585-0200	20.000	3.500	20.127	0.060	8.364	22.841	10.935	10.872	55.10	39.91	95.00	2.75

NOTE: THE "E1585" DASH NO. IS THE THEORETICALLY LARGEST REFLECTOR THAT CAN BE FORMED FROM EXISTING MASTER TOOLING.

UNLESS OTHERWISE SPECIFIED DIMENSIONS ARE IN INCHES [mm] GD&T PER ASME Y14.5-2009 DO NOT SCALE DRAWING		CONTRACT NO. 13-E1585		42310 WINCHESTER RD. TEMECULA, CA 92590 WWW.OPTIFORMS.COM	
FRACTIONS ± 1/16	DECIMALS ± .02 XXX ± .005	ANGLES ± 1/2°	DRAWN JIW	DATE 09/05/17	
TOLERANCES SURFACE ROUGHNESS DEBURR SHARP EDGES & HOLES (RMS) .015 MAX. CHAMFER THREADS .01 PAST ROOT DIAMETER			CHECKED RRS	DATE 09/05/17	
NEXT ASSY		USED ON	ELECTROFORMED NICKEL - LSSN TYPE 1		SIZE C
APPLICATION		THIRD ANGLE PROJECTION	SCALE 1:4	WT (REF)	CAGE CODE 0Y1Y4
			SEE NOTE 3	CAD NO. E1585	DWG. NO. E1585
					REV Ø
					SHEET 1 OF 1