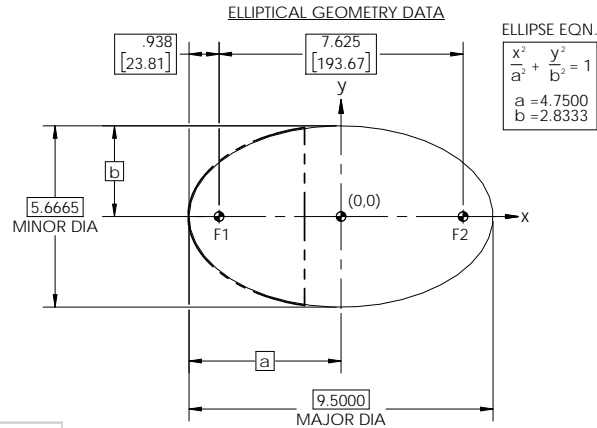
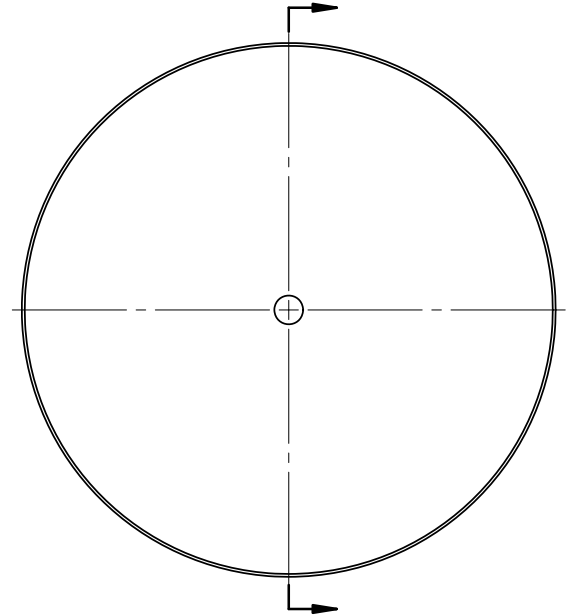
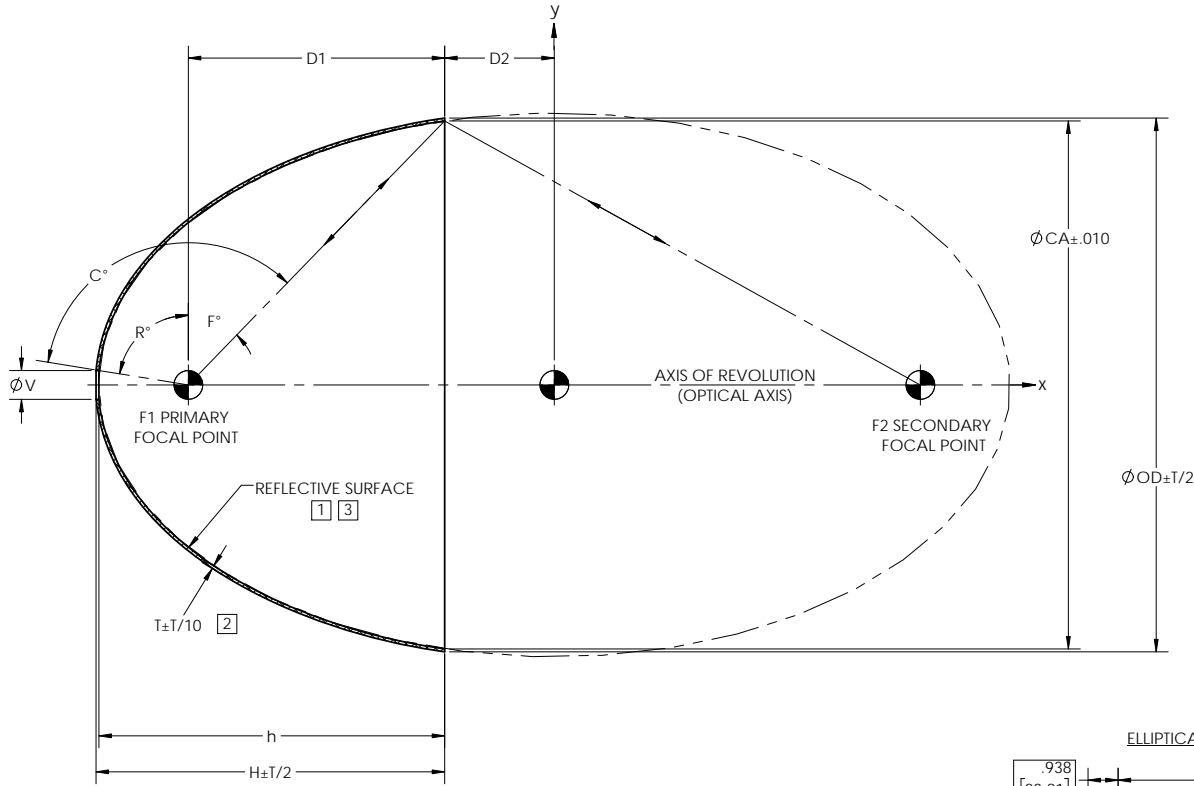


NOTES: UNLESS OTHERWISE SPECIFIED

- 1 ELECTROFORM REFLECTOR FROM MASTER TOOL WITH SPECULAR SURFACE QUALITY OF 80-50 SCRATCH-DIG PER MIL-PRF-13830B.
- 2 NOMINAL THICKNESS (T) MAY VARY ± T/4 WITHIN .25 OF EDGES.
- 3 REFLECTIVE SURFACE COATING TO BE SEPARATELY SPECIFIED.

| REVISIONS | | | |
|-----------|-------------------------|----------|----------|
| REV | DESCRIPTION | DATE | APPROVED |
| Ø | INITIAL DRAWING RELEASE | 05/31/96 | GFW |
| A | REVISED DIM TOL | 02/05/98 | KEN S |
| B | REVISED TOLERANCES | 06/30/98 | KEN S |
| C | CORRECTED GEOMETRY DATA | 02/02/00 | GFW |
| D | UPDATED DRAWING FORMAT | 08/15/17 | RRS |



| DASH NO. | CA | V | OD | T | D1 | D2 | H | h | R° | F° | C° | f# |
|-----------|-------|-------|-------|-------|-------|-------|-------|-------|-------|-------|--------|------|
| E194 | 5.500 | 0.300 | 5.560 | 0.030 | 2.669 | 1.143 | 3.630 | 3.600 | 80.85 | 44.15 | 124.99 | 1.03 |
| E194-0100 | 5.500 | 0.300 | 5.561 | 0.030 | 2.669 | 1.143 | 3.630 | 3.600 | 80.85 | 44.15 | 124.99 | 1.03 |
| E194-0200 | 5.500 | 1.000 | 5.561 | 0.030 | 2.669 | 1.143 | 3.564 | 3.532 | 59.91 | 44.15 | 104.06 | 1.03 |
| E194-0300 | 5.500 | 0.625 | 5.561 | 0.030 | 2.669 | 1.143 | 3.609 | 3.578 | 71.02 | 44.15 | 115.17 | 1.03 |

NOTE: THE "E194" DASH NO. IS THE THEORETICALLY LARGEST REFLECTOR THAT CAN BE FORMED FROM EXISTING MASTER TOOLING.

| | | | | | | | |
|---|------------------------|---|--------------|---|--------------|--------------|-----------------|
| UNLESS OTHERWISE SPECIFIED DIMENSIONS ARE IN INCHES (mm) GD&T PER ASME Y14.5-2009 DO NOT SCALE DRAWING | | CONTRACT NO. 00-E194 | | 42310 WINCHESTER RD. TEMECULA, CA 92590 WWW.OPTIFORMS.COM | | | |
| TOLERANCES FRACTIONS ± 1/16 DECIMALS ± .02 ANGLES ± 1/2° XXX ± .005 | | DRAWN JIW DATE 08/15/17 | CHECKED DATE | | | | |
| SURFACE ROUGHNESS √015 MAX CHAMFER THREADS Ø1 PAST ROOT DIAMETER | | ENGR RRS DATE 08/15/17 | MATERIAL | REFLECTOR, ELLIPTICAL 7.62"/194mm (F1-F2) | | | |
| DEBURR SHARP EDGES & HOLES (R) Ø15 MAX | | FINISH ELECTROFORMED NICKEL - LSSN TYPE 1 | SCALE 1:2 | | | SIZE C | CAGE CODE OY1Y4 |
| APPLICATION | THIRD ANGLE PROJECTION | SEE NOTE 3 | SCALE 1:2 | WT (REF) | CAD NO. E194 | SHEET 1 OF 1 | |