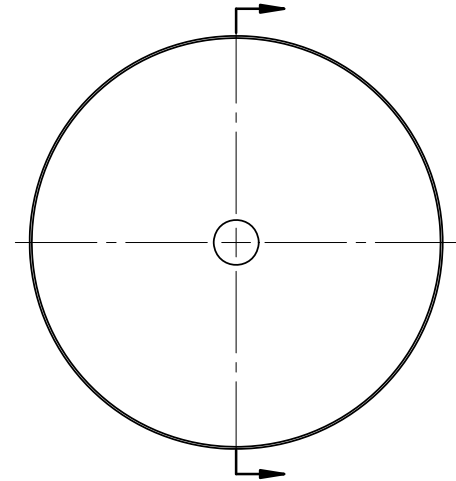
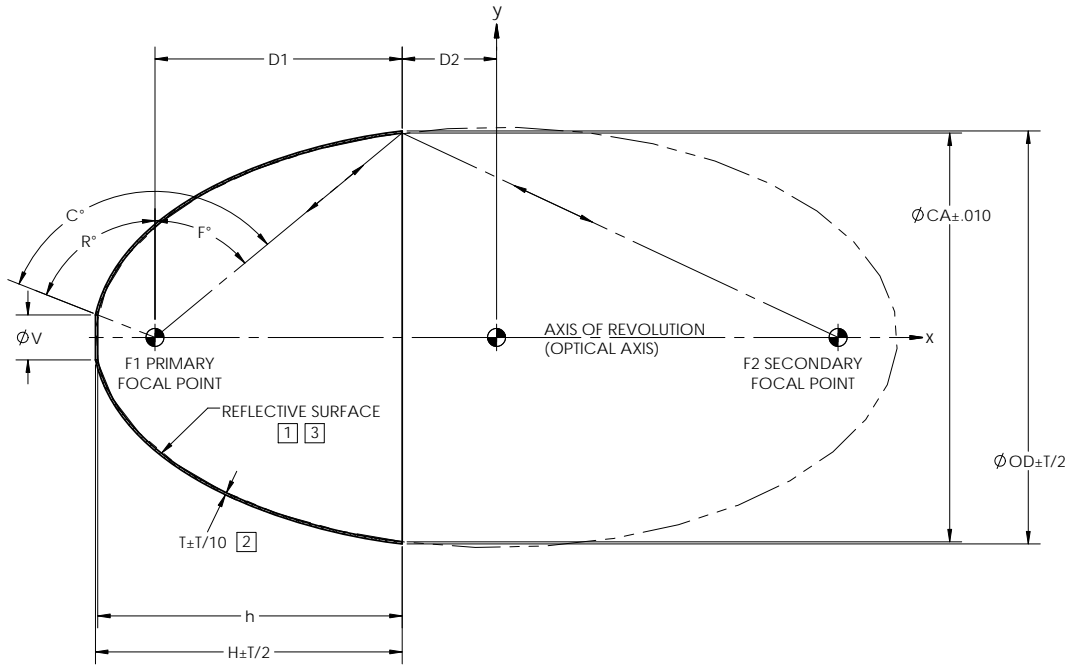


NOTES: UNLESS OTHERWISE SPECIFIED

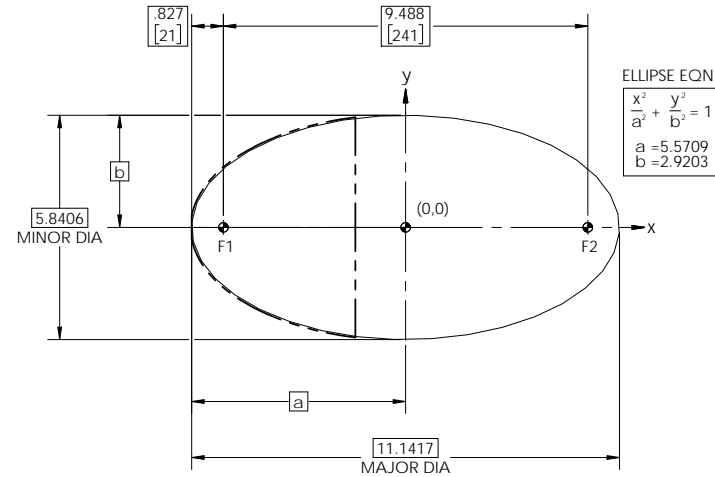
- 1 ELECTROFORM REFLECTOR FROM MASTER TOOL WITH SPECULAR SURFACE QUALITY OF 80-50 SCRATCH-DIG PER MIL-PRF-13830B.
- 2 NOMINAL THICKNESS (T) MAY VARY ± T/4 WITHIN .25 OF EDGES.
- 3 REFLECTIVE SURFACE COATING TO BE SEPARATELY SPECIFIED.

REVISIONS			
REV	DESCRIPTION	DATE	APPROVED
Ø	INITIAL DRAWING RELEASE	05/31/96	GFW
A	-1 V WAS Ø 1.25, -13 V WAS Ø .675	10/23/97	KMT
B	REVISED DIM TOLERANCES	02/11/98	KMT
C	REVISED TOLERANCES	06/30/98	KEN S
D	CORRECTED GEOMETRY DATA	03/21/00	GFW
E	ADDED -14	08/28/00	MSP
F	ADDED -15	05/15/08	MAS
G	UPDATED DRAWING FORMAT	08/15/17	RRS



DASH NO.	CA	V	OD	T	D1	D2	H	h	R°	F°	C	f#
E241	5.677	0.625	4.462	0.030	1.076	3.668	1.852	1.821	56.12	26.09	82.20	1.98
E241-0100	5.341	1.440	5.403	0.030	2.490	2.254	3.178	3.145	42.28	42.99	85.28	1.40
E241-0200	5.677	1.250	5.737	0.030	3.435	1.309	4.165	4.132	48.15	50.43	98.58	1.18
E241-0300	5.677	2.000	5.737	0.030	3.435	1.309	3.961	3.925	26.10	50.43	76.53	1.18
E241-0400	4.900	1.000	4.963	0.030	1.712	3.032	2.488	2.457	56.12	34.95	91.07	1.66
E241-0500	5.677	1.850	5.737	0.030	3.435	1.309	4.010	3.975	30.27	50.43	80.70	1.18
E241-0600	3.960	0.625	4.029	0.030	0.649	4.095	1.475	1.444	68.54	18.15	86.69	2.29
E241-0700	4.900	0.625	4.963	0.030	1.712	3.032	2.538	2.507	68.54	34.95	103.49	1.66
E241-0800	4.900	0.750	4.963	0.030	1.712	3.032	2.524	2.493	64.34	34.95	99.29	1.66
E241-0900	5.341	0.625	5.403	0.030	2.490	2.254	3.315	3.284	68.54	42.99	111.53	1.40
E241-1000	5.677	2.250	5.737	0.030	3.435	1.309	3.870	3.832	19.43	50.43	69.86	1.18
E241-1100	3.570	1.250	3.642	0.030	0.335	4.409	1.065	1.033	48.15	10.63	58.78	2.61
E241-1200	5.677	1.000	5.737	0.030	3.435	1.309	4.211	4.179	56.12	50.43	106.55	1.18
E241-1300	5.677	0.625	5.737	0.030	3.435	1.309	4.260	4.230	68.54	50.43	118.97	1.18
E241-1400	3.960	1.181	4.029	0.030	0.649	4.095	1.393	1.361	50.32	18.15	68.47	2.29
E241-1500	4.396	1.000	4.462	0.030	1.076	3.668	1.852	1.821	56.12	26.09	82.20	1.98

ELLIPTICAL GEOMETRY DATA



NOTE: THE "E241" DASH NO. IS THE THEORETICALLY LARGEST REFLECTOR THAT CAN BE FORMED FROM EXISTING MASTER TOOLING.

UNLESS OTHERWISE SPECIFIED DIMENSIONS ARE IN INCHES [mm] GD&T PER ASME Y14.5-2009 DO NOT SCALE DRAWING		CONTRACT NO. 98-E241		optiforms® 42310 WINCHESTER RD. TEMECULA, CA 92590 WWW.OPTIFORMS.COM	
FRACTIONS ± 1/16 DECIMALS ± .02 ANGLES ± 1/2° TOLERANCES .XXX ± .005		DRAWN JIW DATE 08/15/17	ELECTROFORMED NICKEL - LSSN TYPE 1		
SURFACE ROUGHNESS √ DEBURR SHARP EDGES & HOLES (RMS) .015 MAX. CHAMFER THREADS .01 PAST ROOT DIAMETER		CHECKED DATE	E241		
MATERIAL		ENGR RRS DATE 08/15/17	REFLECTOR, ELLIPTICAL 9.49"/241mm (F1-F2)		
FINISH	SEE NOTE 3	SCALE 1:2		CAGE CODE 0Y1Y4	DWG. NO. E241
APPLICATION	THIRD ANGLE PROJECTION	SCALE	WT (REF)	CAD NO. E241	REV G
		SHEET 1 OF 1			