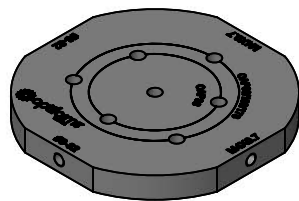
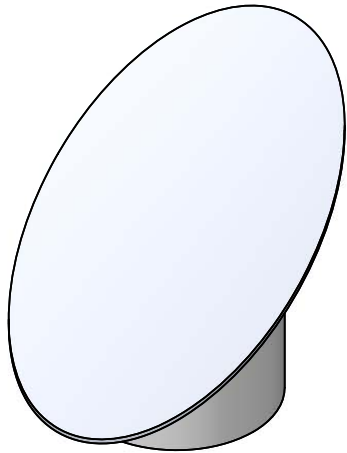
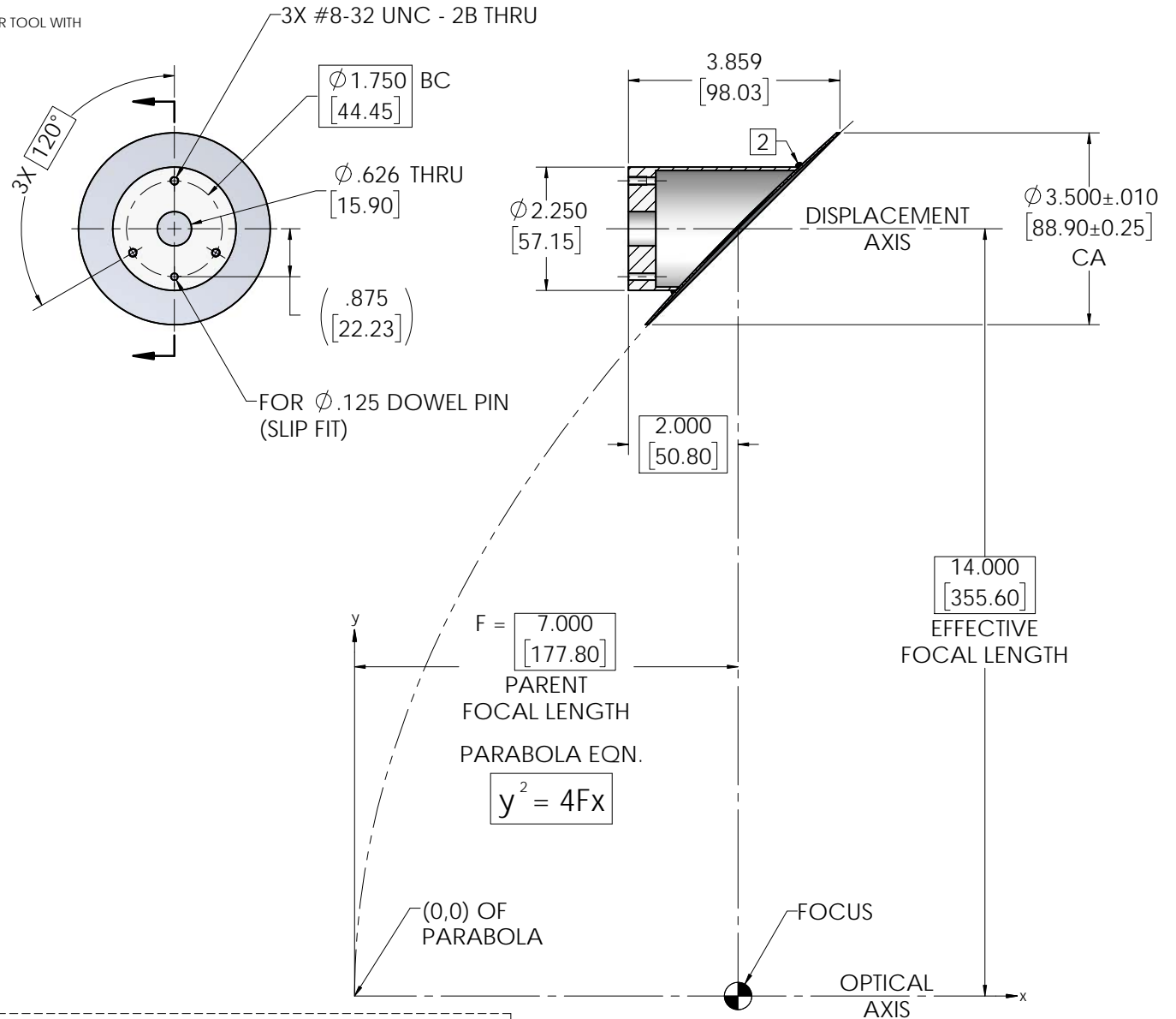


INFORMATION IN THIS DRAWING IS FOR REFERENCE ONLY

REVISIONS			
REV	DESCRIPTION	DATE	APPROVED
Ø	INITIAL DRAWING RELEASE	11/29/17	JPH

NOTES: UNLESS OTHERWISE SPECIFIED

- REFLECTOR SURFACE QUALITY: ELECTROFORM REFLECTOR FROM MASTER TOOL WITH SPECULAR SURFACE FINISH OF 80-50 SCRATCH-DIG PER MIL-PRF-13830-B.
- MOUNT BONDED TO REFLECTOR USING EPOXY
- REFLECTOR: ELECTROFORMED - NICKEL LSSN TYPE 1.
MOUNT: 6061-T6 ALUMINUM, BLACK ANODIZE FINISH.



OPTIONAL ACCESSORY: 1046-003 (UNIVERSAL OAP ADAPTER)

UNLESS OTHERWISE SPECIFIED DIMENSIONS ARE IN INCHES [mm] GD&T PER ASME Y14.5-2009 DO NOT SCALE DRAWING		CONTRACT NO. 17-OAP178		optiforms® 42310 WINCHESTER RD. TEMECULA, CA 92590 WWW.OPTIFORMS.COM	
TOLERANCES		DRAWN JPH DATE 11/29/17	OFF-AXIS ASSY, PARABOLIC OAP178 SEGMENT		REV Ø
FRACTIONS ± 1/16	DECIMALS ± .02	CHECKED DATE	SCALE 2:3		SIZE C
ANGLES ± 1/2°	XXX ± .005	ENGR RRS DATE 11/29/17	CAGE CODE 0Y1Y4		DWG. NO. OAP178-0000-XXXX
SURFACE ROUGHNESS √ 0.15 MAX DEBURR SHARP EDGES & HOLES RING 0.015 MAX CHAMFER THREADS Ø1 PAST ROOT DIAMETER		MATERIAL SEE NOTE 3		CAD NO. OAP178	
THIRD ANGLE PROJECTION		FINISH N/A		SHEET 1 OF 1	