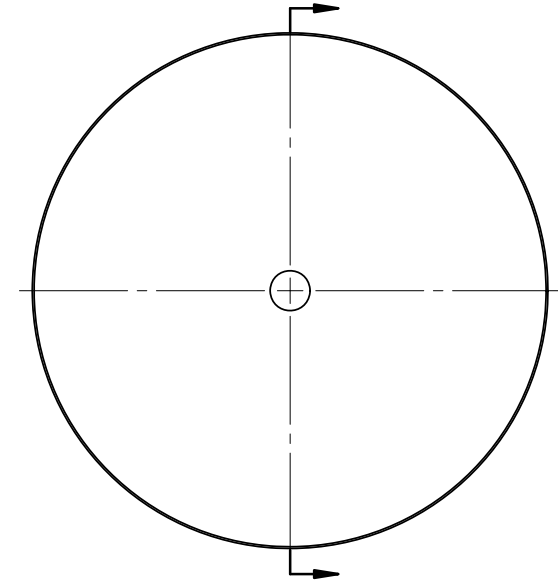
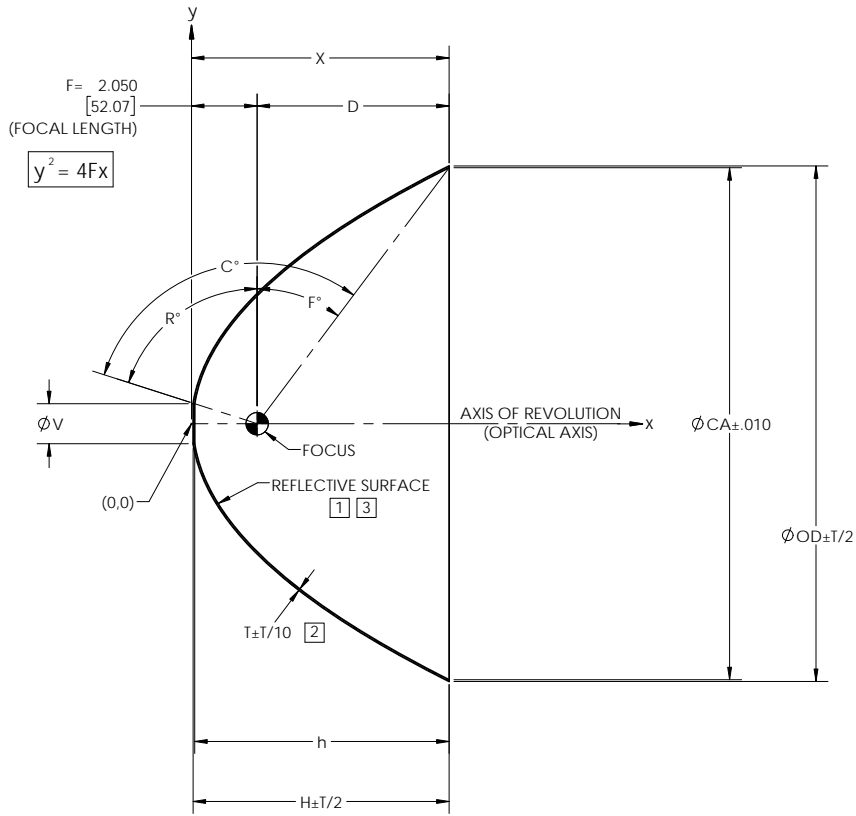


REVISIONS			
REV	DESCRIPTION	DATE	APPROVED
Ø	INITIAL DRAWING RELEASE	09/16/05	TAK
A	ADDED -3	02/06/06	JJC
B	ADDED -4	08/08/07	SJM
C	UPDATED DRAWING FORMAT	07/26/17	JPH

NOTES: UNLESS OTHERWISE SPECIFIED

- 1 ELECTROFORM REFLECTOR FROM MASTER TOOL WITH SPECULAR SURFACE QUALITY OF 80-50 SCRATCH-DIG PER MIL-PRF-13830B.
- 2 NOMINAL THICKNESS (T) MAY VARY ± T/4 WITHIN .25 OF EDGES.
- 3 REFLECTIVE SURFACE COATING TO BE SEPARATELY SPECIFIED.



DASH NO.	CA	V	OD	T	X	D	H	h	R°	F°	C°
P51	16.000	1.250	16.112	0.050	8.000	6.000	8.002	7.951	72.24	36.87	109.11
P51-0100	16.000	3.940	16.112	0.050	8.000	6.000	7.571	7.515	37.56	36.87	74.43
P51-0200	12.084	1.575	12.204	0.050	4.563	2.563	4.537	4.486	67.72	22.99	90.71
P51-0300	16.000	2.500	16.112	0.050	8.000	6.000	7.857	7.805	55.29	36.87	92.16
P51-0400	16.000	1.250	16.112	0.050	8.000	6.000	8.002	7.951	72.24	36.87	109.11
P51-0500	16.000	3.810	16.112	0.050	8.000	6.000	7.602	7.546	39.07	36.87	75.94

NOTE: THE "P51" DASH NO. IS THE THEORETICALLY LARGEST REFLECTOR THAT CAN BE FORMED ON EXISTING MASTER TOOLING.

UNLESS OTHERWISE SPECIFIED DIMENSIONS ARE IN INCHES [mm] GD&T PER ASME Y14.5-2009 DO NOT SCALE DRAWING		CONTRACT NO. 04-P51		42310 WINCHESTER RD. TEMECULA, CA 92590 WWW.OPTIFORMS.COM	
FRACTIONS ± 1/16 DECIMALS ± .02 ANGLES ± 1/2° TOLERANCES XXX ± .005		BRAWN JIW DATE 07/26/17	optiforms		
SURFACE ROUGHNESS √ DEBURR SHARP EDGES & HOLES (RMS) .015 MAX. CHAMFER THREADS .01 PAST ROOT DIAMETER		CHECKED DATE	REFLECTOR, PARABOLIC		
THIRD ANGLE PROJECTION		ENGR RRS DATE 07/26/17	2.00" / 51mm FL		
APPLICATION		MATERIAL ELECTROFORMED NICKEL - LSSN TYPE 1	SCALE 1:3		
NEXT ASSY USED ON		FINISH	SIZE C	CAGE CODE OY1Y4	DWG. NO. P51
		SEE NOTES 1.3	WT. (REF)	CAD NO. P51	REV C
			SHEET	1 OF 1	